



Spare parts for:

## Food processing equipment



Suitable for:

# SIGMA



This catalogue is automatically generated.  
Therefore, the sequence of the items might  
not be always shown at best.  
Updates will be issued in case of additions  
and/or amendments.

*Suitable universal spare parts may not be included*





Suitable for:

# SIGMA

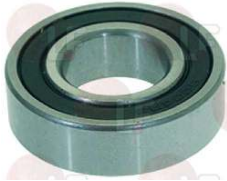


Suitable for:

## Bearings

### 9063012 BEARING 6004 DDU

external  $\varnothing$  42 mm -internal  $\varnothing$  20 mm-thickness 12 mm  
 for Bone bandsaw (SIRMAN) SO2400  
 for Cutter (ROBOT COUPE) ECL52  
 for Grater (FIMAR) GR8D  
 for Kneader (FIMAR) IM12 - IM18  
 for Kneader (SIGMA) TAURO22 - TAURO25 - TAURO30  
 TAURO35 - TAURO40  
 for Meat mincer (EVEREST) TC22P  
 for Meat mincer (FIMAR) TR8D  
 for Planetary machine (FIMAR) IP10 - IP20  
 for Potato peeler (FAMA) FP-103  
 for Potato peeler (PASQUINI) PSP700CE10KG  
 PSP700CE15KG - PSP70010KG - PSP70015KG  
 for Vegetables/mozzarella cutter (ROBOT COUPE)  
 CL55D



SIGMA CUS60042RS

SIGMA 13000304

### 3063005

### BEARING 6202 2RS NSK

external  $\varnothing$  35 mm -internal  $\varnothing$  15 mm-thickness 11 mm  
 for Cutter (GAM) PRATIC3  
 for Kneader (FAMA) KG5 - KG8  
 for Meat mincer (FIMAR) TR8D  
 for Pizza dough stretcher (FIMAR) FIP30 - FIP40  
 FIP42 - FI30 - FI32 - FI40 - FI42 - FPP30  
 FPP40 - FP30 - FP40  
 for Pizza dough stretcher (IGF) B30 - B40 - L30  
 L40  
 for Potato peeler (DITO ELECTROLUX) T5S  
 for Potato peeler (ZANUSSI) T5S  
 for Slicer (BRAHER) USA250 - USA280 - USA300  
 USA320  
 for Slicer (FIMAR) HL250 - HL275 - HS250 - HS300  
 H220 - H250 - H275 - H300 - V250



SIGMA 13000013

### 3063120 BEARING 6202 2RS SKF

$\varnothing$  ext. 35 mm -  $\varnothing$  int. 15 mm - thickness 11 mm  
 for Cutter (GAM) PRATIC3  
 for Kneader (FAMA) KG5 - KG8  
 for Meat mincer (FIMAR) TR8D  
 for Pizza dough stretcher (FIMAR) FIP30 - FIP40  
 FIP42 - FI30 - FI32 - FI40 - FI42 - FPP30  
 FPP40 - FP30 - FP40  
 for Pizza dough stretcher (IGF) B30 - B40 - L30  
 L40  
 for Potato peeler (DITO ELECTROLUX) T5S  
 for Potato peeler (ZANUSSI) T5S  
 for Slicer (BRAHER) USA250 - USA280 - USA300  
 USA320  
 for Slicer (FIMAR) HL250 - HL275 - HS250 - HS300  
 H220 - H250 - H275 - H300 - V250



SIGMA 13000013

### 3063017

### BEARING 6203 2RS NSK

external  $\varnothing$  40 mm -internal  $\varnothing$  17 mm-thickness 12 mm  
 for Bone bandsaw (FIMAR) SE1550 - SE1830  
 for Bone bandsaw (HUDSON) SEG.235  
 for Bone bandsaw (SIRMAN)  
 for Cutter (DITO ELECTROLUX) K35  
 for Kneader (FIMAR) IM12 - IM18 - IM7  
 for Meat mincer (FIMAR) 12 - 22  
 for Pizza dough stretcher (FIMAR) SI320 - SI420  
 SI520  
 for Planetary machine (DITO ELECTROLUX) XBE10  
 XBM10  
 for Potato peeler (DITO ELECTROLUX) CD4 - CD8  
 PL4 - PL8 - T10S - T15S  
 for Potato peeler (DUPLEX-AGUSTONI) EXPORT15  
 EXPORT4 - EXPORT6 - EXPORT8



SIGMA 13000014

SIGMA 13000314



Suitable for:

# SIGMA



Suitable for:

## 3063121 BEARING 6203 2RS SKF

ø ext. 40 mm - ø int. 17 mm - thickness 12 mm  
 for Bone bandsaw (FIMAR) SE1550 - SE1830  
 for Bone bandsaw (HUDSON) SEG.235  
 for Bone bandsaw (SIRMAN) PL4  
 for Cutter (DITO ELECTROLUX) K35  
 for Kneader (FIMAR) IM12 - IM18 - IM7  
 for Meat mincer (FIMAR) 12 - 22  
 for Pizza dough stretcher (FIMAR) SI320 - SI420  
 SI520  
 for Planetary machine (DITO ELECTROLUX) XBE10  
 XBM10  
 for Potato peeler (DITO ELECTROLUX) CD4 - CD8  
 PL4 - PL8 - T10S - T15S  
 for Potato peeler (DUPLEX-AGUSTONI) EXPORT15  
 EXPORT4 - EXPORT6 - EXPORT8



SIGMA 13000014

SIGMA 13000314

## 1063901 BEARING 6204 2RS NSK

external ø 47 mm - internal ø 20 mm - thickness 14 mm  
 for Kneader (GAM) A30  
 for Kneader (IGF) 2200/S25 - 2200/S38  
 for Kneader (SIGMA) TAURO22 - TAURO25 - TAURO30  
 for Meat mincer (FIMAR) 12C - 12TS - 22C - 22TE  
 for Mussel cleaner (LA MINERVA) C/E560C - C/E565C  
 for Planetary machine (SIGMA) BM10 - BM20 - BM30  
 for Potato peeler (ANGELO PO) MPK10 - MPK20 - MPK5  
 for Potato peeler (LA MINERVA) C/560 - C/565  
 C/570 - C/71  
 for Slicer (BRAHER) MAT292 - MAT320 - MAT350  
 for Vegetables/mozzarella cutter (DITO ELECTROLUX)  
 TRS



SIGMA CUS62042RS

SIGMA 13000015

SIGMA 13000315

## 3063122 BEARING 6204 2RS SKF

ø ext. 47 mm - ø int. 20 mm - thickness 14 mm  
 for Kneader (GAM) A30  
 for Kneader (IGF) 2200/S25 - 2200/S38  
 for Kneader (SIGMA) TAURO22 - TAURO25 - TAURO30  
 for Meat mincer (FIMAR) 12C - 12TS - 22C - 22TE  
 for Mussel cleaner (LA MINERVA) C/E560C - C/E565C  
 for Planetary machine (SIGMA) BM10 - BM20 - BM30  
 for Potato peeler (ANGELO PO) MPK10 - MPK20 - MPK5  
 for Potato peeler (LA MINERVA) C/560 - C/565  
 C/570 - C/71  
 for Slicer (BRAHER) MAT292 - MAT320 - MAT350  
 for Vegetables/mozzarella cutter (DITO ELECTROLUX)  
 TRS



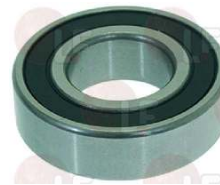
SIGMA CUS62042RS

SIGMA 13000015

SIGMA 13000315

## 9063005 BEARING 6205 2RS

external ø 52 mm - internal ø 25 mm - thickness 15 mm  
 for Grater (SIRMAN)  
 since 1/01/03  
 GF  
 for Kneader (OEM) FX/RVE - F301/2  
 for Kneader (PIZZA GROUP) - Series TF - Series TR  
 TRM22  
 for Kneader (SIGMA) TAURO22 - TAURO25 - TAURO30  
 for Meat mincer (FAMA) - Series 12CE  
 for Planetary machine (DITO ELECTROLUX) BE20  
 BM20 - XBM40  
 for Planetary machine (SIGMA) BM10 - BM20 - BM30  
 for Planetary machine (ZANUSSI) BE20 - BM20  
 XBM40  
 for Potato peeler (DITO ELECTROLUX) T10S - T15S



SIGMA 13000016

SIGMA 13000316



Suitable for:

# SIGMA



Suitable for:

## 9063001 BEARING 6206 2RS

external  $\varnothing$  62 mm -internal  $\varnothing$  30 mm-thickness 16 mm  
 for Kneader (FIMAR) IM50S  
 for Kneader (GAM) S16 - S20 - S30 - S40  
 for Meat mincer (FIMAR) 32RS  
 for Planetary machine (DITO ELECTROLUX) BE20  
 BMX60 - BMX80 - BM20 - BM30 - MBE40 - MB40  
 for Planetary machine (SIGMA) BM10 - BM20 - BM30  
 BM40 - BM60 - BM80  
 for Planetary machine (ZANUSSI) BE20 - BMX60  
 BMX80 - BM20 - BM30 - MBE40 - MB40  
 for Vegetables/mozzarella cutter (DITO ELECTROLUX)  
 TR260  
 for Vegetables/mozzarella cutter (ZANUSSI) TR260



SIGMA 13000017

SIGMA 13000317

## 9063015 BEARING 6207 2RS

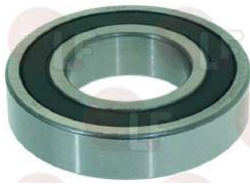
external  $\varnothing$  72 mm -internal  $\varnothing$  35 mm-thickness 17 mm  
 for Planetary machine (DITO ELECTROLUX) BMX60  
 BMX80  
 for Planetary machine (SIGMA) BM40  
 for Planetary machine (ZANUSSI) BMX60 - BMX80



SIGMA 13000018

## 9063014 BEARING 6208 2RS

external  $\varnothing$  80 mm -internal  $\varnothing$  40 mm-thickness 18 mm  
 for Planetary machine (SIGMA) BM40 - BM60 - BM80



SIGMA 13000319

## 1063200 BEARING 6300 2RS

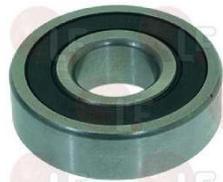
external  $\varnothing$  35 mm -internal  $\varnothing$  10 mm-thickness 11 mm  
 for Kneader (SIGMA) TAURO22 - TAURO25 - TAURO30  
 TAURO35 - TAURO40



SIGMA 13000323

## 9063004 BEARING 6304 2RS

$\varnothing$  ext. 52 mm -  $\varnothing$  int. 21 mm - h 15 mm  
 for Kneader (DITO ELECTROLUX) PSR100  
 for Kneader (GAM) L16 - L20 - L30 - L40 - S30  
 S40  
 for Kneader (SIGMA) TAURO22 - TAURO25 - TAURO30  
 TAURO35 - TAURO40  
 for Kneader (ZANUSSI) PSR100  
 for Planetary machine (DITO ELECTROLUX) BE20  
 BM20 - BM30 - XBE20 - XBE30 - XBM30 - XBM40  
 for Planetary machine (ZANUSSI) BE20 - BM20 - BM30  
 XBE20 - XBE30 - XBM30 - XBM40  
 for Potato peeler (DITO ELECTROLUX) T25E  
 for Potato peeler (ZANUSSI) T25E



SIGMA 13000325

## 9063013 BEARING 6305 DDU

external  $\varnothing$  62 mm -internal  $\varnothing$  25 mm-thickness 17 mm  
 for Cutter (DITO ELECTROLUX) K120  
 for Cutter (ZANUSSI) K120  
 for Kneader (DITO ELECTROLUX) PSN - PSR  
 for Planetary machine (DITO ELECTROLUX) BMX60  
 MBE40 - MB40 - XBE60  
 for Planetary machine (SIGMA) BM40 - BM60 - BM80  
 for Planetary machine (ZANUSSI) BMX60  
 for Potato peeler (ZANUSSI) T25



SIGMA CUS63052RS

SIGMA 13000326

## Belts

**5023129 CARPET 1400x420x1.5 mm**  
for Pizza dough stretcher (SIGMA) LM4.5



SIGMA 06001002

**5034632 CARPET 2360x600x1.5 mm**  
for Pizza dough stretcher (SIGMA) SFG600TL  
SFG600TM



SIGMA 06001009

**5052984 MULTIGRIP BELT J 1092 H28 11 GROOVES**  
for Pizza dough stretcher (SIGMA) SFG500T



SIGMA 12003949

**9062012 MULTIGRIP BELT J 660 H35 14 GROOVES**  
for Kneader (SIGMA) TAURO35 - TAURO40



SIGMA 12003943

**9062008 MULTIGRIP BELT TB2 630 H20 9 GROOVES**  
for Kneader (SIGMA) TAURO22 - TAURO25 - TAURO30



SIGMA 12003952

**9062004 TOOTHED BELT 22x8x800 mm Li**  
for Planetary machine (SIGMA) BM10



SIGMA 12003806

**9062005 TOOTHED BELT 31x8x1000 mm Li**  
for Planetary machine (SIGMA) BM20 - BM30



SIGMA 01097080

**9062006 TOOTHED BELT 33x10x1332 mm Li**  
for Planetary machine (SIGMA) BM40



SIGMA 01095080

**9062007 TOOTHED BELT 41x13x1455 mm Li**  
for Planetary machine (SIGMA) BM60 - BM80



SIGMA 01101073

**9062009 TOOTHED BELT 720 RPP8 807 H15**  
for Kneader (SIGMA) TAURO22 - TAURO25 - TAURO30



SIGMA 12003908





Suitable for:

**9062010 TOOTHED BELT720 RPP8 807 H24**  
for Kneader (SIGMA) TAURO22 - TAURO25 - TAURO30



SIGMA 12003918

# SIGMA



Suitable for:

**9062011 TOOTHED BELT720 RPP8 807 H29**  
for Kneader (SIGMA) TAURO35 - TAURO40



SIGMA 12003909

## Contactors

**9454001 CONTACTOR SIEMENS 3TG1010-1AC2**  
coil 16A 24V 50/60Hz  
3 normally open contacts  
1 normally open auxiliary contact  
for Planetary machine (SIGMA) BM10 - BM20 - BM30  
BM40 - BM60 - BM80



SIGMA 25005108

## Electronic printed-circuit boards

**9390005 ELECTRON.CONTROL CIRCUIT BOARD 130x90 mm**  
for Kneader (SIGMA) TAURO22 - TAURO25 - TAURO30  
TAURO35 - TAURO40



SIGMA 25001486

## Gears

**5025884 BOTTOM CONVEYOR COVER**  
external  $\varnothing$  140 mm - square hole 34x34 mm  
for Planetary machine (SIGMA) BM60



SIGMA 01101084

SIGMA 85101084-2

**5029339 TOOTHED BOSS WITH BEARING HOUSING**  
flange 69x69 mm - external  $\varnothing$  54 mm  
internal  $\varnothing$  25 mm - teeth number 22 mm  
for Kneader (SIGMA) TAURO35 - TAURO40



SIGMA 01179014



# SIGMA



Suitable for:

## 5035045 TOOTHED BOSS WITH BEARING HOUSING

flange 69x69 mm - internal  $\varnothing$  45 mm  
internal  $\varnothing$  42 mm -total teeth 22 mm  
for Kneader (SIGMA) BS30



SIGMA 01164011

Suitable for:

## 5025883 TOP CONVEYOR COVER

external  $\varnothing$  140 mm - square hole 38x38 mm  
for Planetary machine (SIGMA) BM60



SIGMA 85101083-2

## 5028298 TOP CONVEYOR COVER

external  $\varnothing$  140 mm - square hole 38x38 mm  
for Planetary machine (SIGMA) BM40



SIGMA 01095087

SIGMA 85095087-2

## Microswitches

### 9240008 MICROSWITCH MV15 15A 250V

for Planetary machine (SIGMA) BM10 - BM20 - BM30  
BM40 - BM60



SIGMA 25001320

### 1240016 MICROSWITCH 16A 250V

for Planetary machine (SAMMIC) BM-11 - BM-22  
BM-22C - BM-42 - BM-5  
for Planetary machine (SIGMA) BM10 - BM20 - BM30  
BM40 - BM60 - BM80



SIGMA EL001301

SIGMA 25001301

SIGMA 25001301+25001302

## Pulleys

### 5025882 HALF-PULLEY FOR VARIATOR $\varnothing$ 240 mm

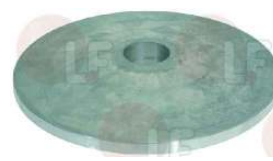
height 53 mm  
for Planetary machine (SIGMA) BM60 - BM80



SIGMA 01101013

### 5028297 HALF-PULLEY FOR VARIATOR $\varnothing$ 240 mm

height 47 mm  
for Planetary machine (SIGMA) BM40



SIGMA 01095013



Suitable for:

Suitable for:

**5035044 TOOTHED PULLEY  $\varnothing$  202 mm**  
height 31 mm - teeth 80  
for Kneader (SIGMA) BS30



SIGMA 01144063

## Shock absorbers

**5038347 SHOCK ABSORBER FOR LID 700N**  
084387  
overall length 380 mm  
for Planetary machine (SIGMA) BM40 - BM60 - BM80



SIGMA 08000001

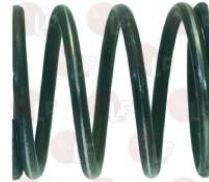
## Springs

**9250002 SPRING  $\varnothing$  54x80 mm FOR VARIABLE SPEED PUL**  
for PLANETARY BM10-BM20-BM30



SIGMA 08097021

**9250003 SPRING  $\varnothing$  73x80 mm FOR VARIABLE SPEED PUL**  
for PLANETARY BM40



SIGMA 08095014

**9250004 SPRING  $\varnothing$  74x90 mm FOR VARIABLE SPEED PUL**  
for PLANETARY BM60



SIGMA 08101014

## Switches

**9319013 BLACK BIPOLAR SWITCH 15A 250V**  
with push-button cap  
for Planetary machine (SIGMA) BM10 - BM20 - BM30  
BM40



SIGMA 25003046

SIGMA 25003046+25003047

**9319012 BLACK THREE-POLE SWITCH 15A 400V**  
with push-button cap  
for Planetary machine (SIGMA) BM10 - BM20 - BM30  
BM40 - BM60 - BM80



SIGMA 25003045

SIGMA 25003045+25003047





Suitable for:

Suitable for:

**9319014 PUSH-BUTTON PANEL 0-I GREEN-RED 12A 600V**  
 with indicator light and push-button cap  
 1 normally closed contact  
 1 normally open contact  
 mounting hole  $\varnothing$  22 mm  
 for Planetary machine (SIGMA) BM10 - BM20 - BM30  
 BM40 - BM60 - BM80



SIGMA 00003545

SIGMA 25009058

## Timers

**9446002 TIMER 120 MINUTES KIT**  
 complete with knob  
 mechanical movement with balance wheel  
 with left hand positioning  
 120 minutes manually set cycle  
 bipolar with contact capacity 16 (3)A 250V  
 max temperature 125°C  
 pin 7x5 mm  
 for Planetary machine (SIGMA) BM10 - BM20 - BM30  
 BM40 - BM60 - BM80



SIGMA 25007039

SIGMA 25007039+25007038

## Tool holder shafts

**5029577 ALUMINUM BOSS**  
 for Kneader (SIGMA) SL35



SIGMA A047018

SIGMA 01144054

**9742008 TOOL SHAFT PIN**  
 size  $\varnothing$  8x37 mm  
 for Planetary machine (SIGMA) BM10 - BM20 - BM30



SIGMA 01098095

## Transformers

**9739001 TRANSFORMER 0-230-400V/0-24V 10VA**  
 primary tension 0-230-400V 50/60Hz 10VA  
 secondary tension 24V  
 for Planetary machine (SIGMA) BM30 - BM40 - BM60  
 BM80



SIGMA 25008001



Suitable for:

# SIGMA



Suitable for:

## Whisks, hooks and flat beaters

**9740011 ALUMINUM BEATER WIDTH 135 mm**  
overall height with coupling 290 mm  
for Planetary machine (SIGMA) BM10



SIGMA 01098165

**9740012 ALUMINUM BEATER WIDTH 200 mm**  
overall height with coupling 360 mm  
for Planetary machine (SIGMA) BM20



SIGMA 01097224

**9740013 ALUMINUM BEATER WIDTH 235 mm**  
overall height with coupling 430 mm  
for Planetary machine (SIGMA) BM30



SIGMA 01161038

SIGMA 01161038-1

**9740021 ALUMINUM HOOK  $\varnothing$  28 mm**  
overall height with coupling 465 mm  
for Kneader (SIGMA) TAURO35 - TAURO40



SIGMA 01144012

**9740008 ALUMINUM HOOK ADJUSTABLE  $\varnothing$**   
overall height with coupling 295 mm  
for Planetary machine (SIGMA) BM10



SIGMA 01098164

**9740009 ALUMINUM HOOK ADJUSTABLE  $\varnothing$**   
overall height with coupling 360 mm  
for Planetary machine (SIGMA) BM20



SIGMA 01097223

**9740010 ALUMINUM HOOK ADJUSTABLE  $\varnothing$**   
overall height with coupling 430 mm  
for Planetary machine (SIGMA) BM30



SIGMA 01161039

**9740020 METAL HOOK  $\varnothing$  22 mm**  
overall height with coupling 400 mm  
for Kneader (SIGMA) TAURO20 - TAURO25 - TAURO30



SIGMA 01147012

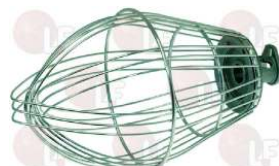
SIGMA 01181002

**9740014 STAINLESS STEEL WHISK WITH THREADS  $\varnothing$  3 mm**  
overall height with coupling 295 mm  
for Planetary machine (SIGMA) BM10



SIGMA 01098114

**9740015 STAINLESS STEEL WHISK WITH THREADS  $\varnothing$  3 mm**  
overall height with coupling 365 mm  
for Planetary machine (SIGMA) BM20

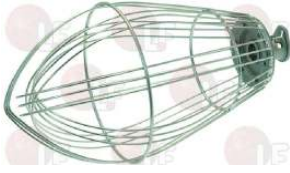


SIGMA 01097114



Suitable for:

**9740016 STAINLESS STEEL WHISK WITH THREADS  $\varnothing$  3 mm**  
overall height with coupling 430 mm  
for Planetary machine (SIGMA) BM30



SIGMA 01161011

## SIGMA



Suitable for:

**5026957 STAINLESS STEEL WHISK WITH WIRES  $\varnothing$  2 mm**  
overall height with coupling 265 mm  
for Planetary machine (SIGMA) PE7.5



SIGMA 01175030

SIGMA 01175030-1